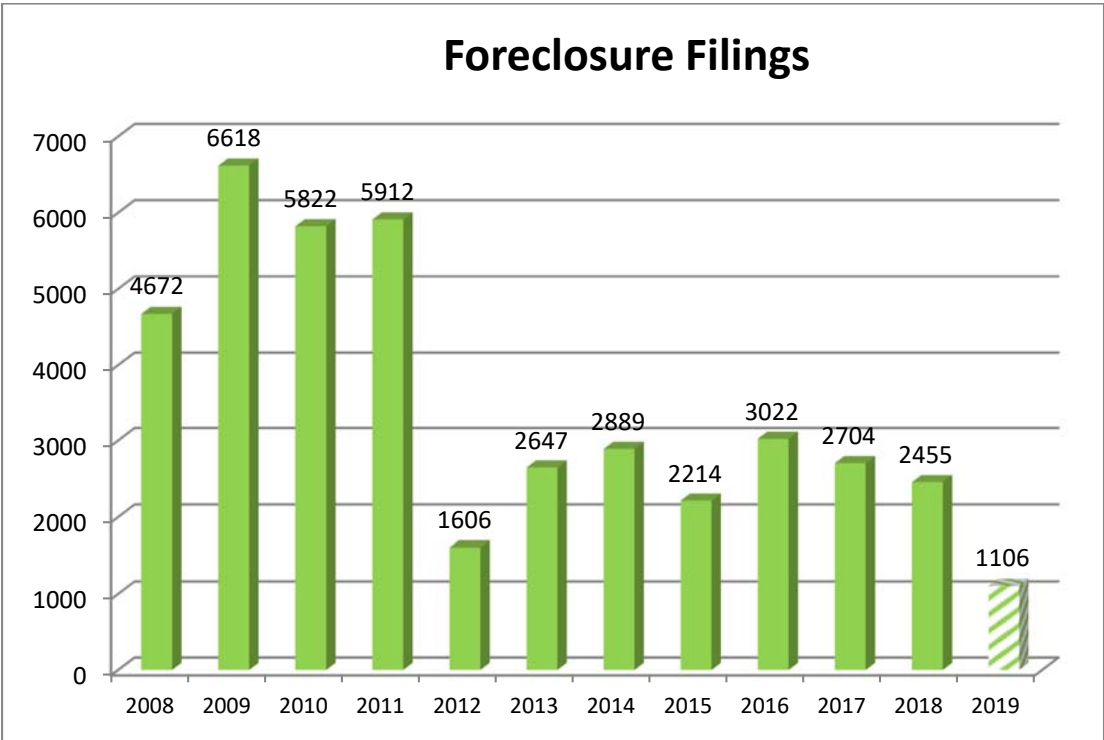
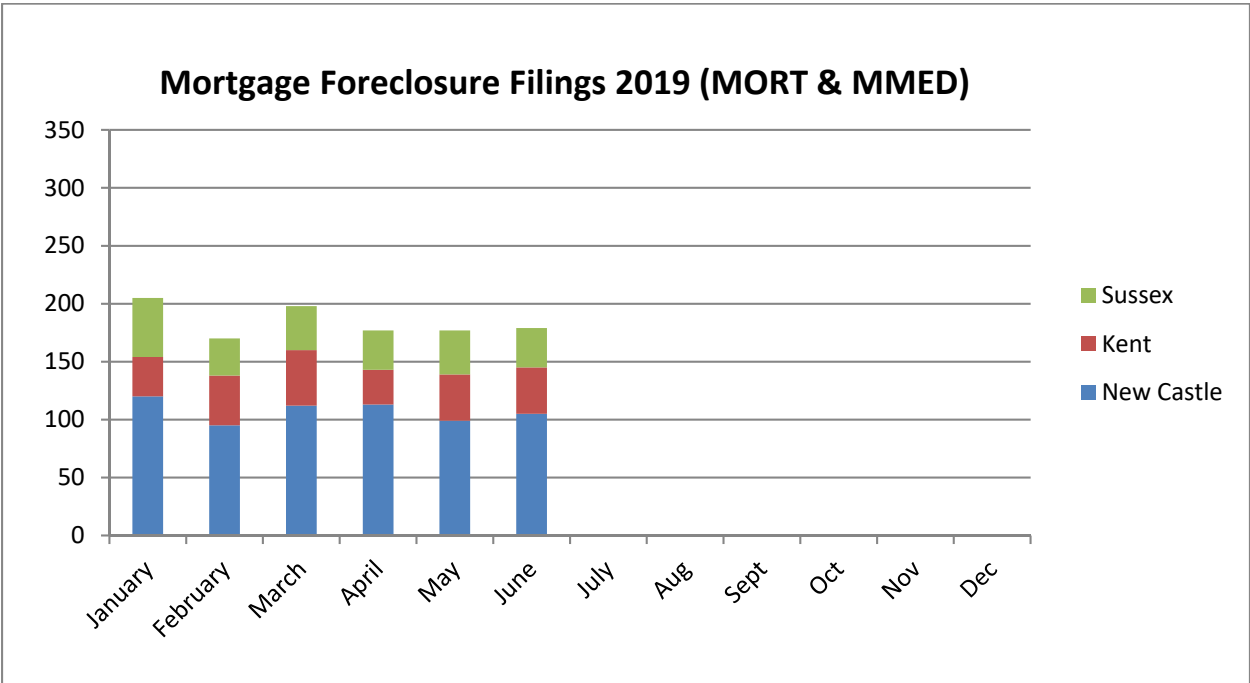


Delaware Foreclosure Data: 2nd Quarter 2019

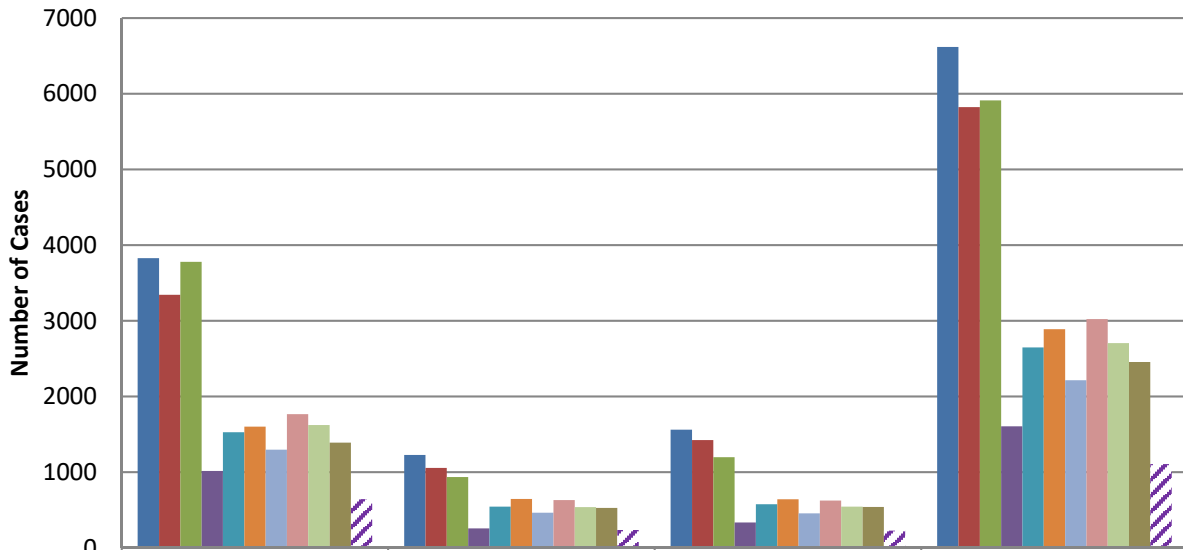


* MMED – Foreclosure actions eligible for the Automatic Residential Mortgage Foreclosure Mediation Program; MORT – Foreclosure actions ineligible for the Mediation Program.

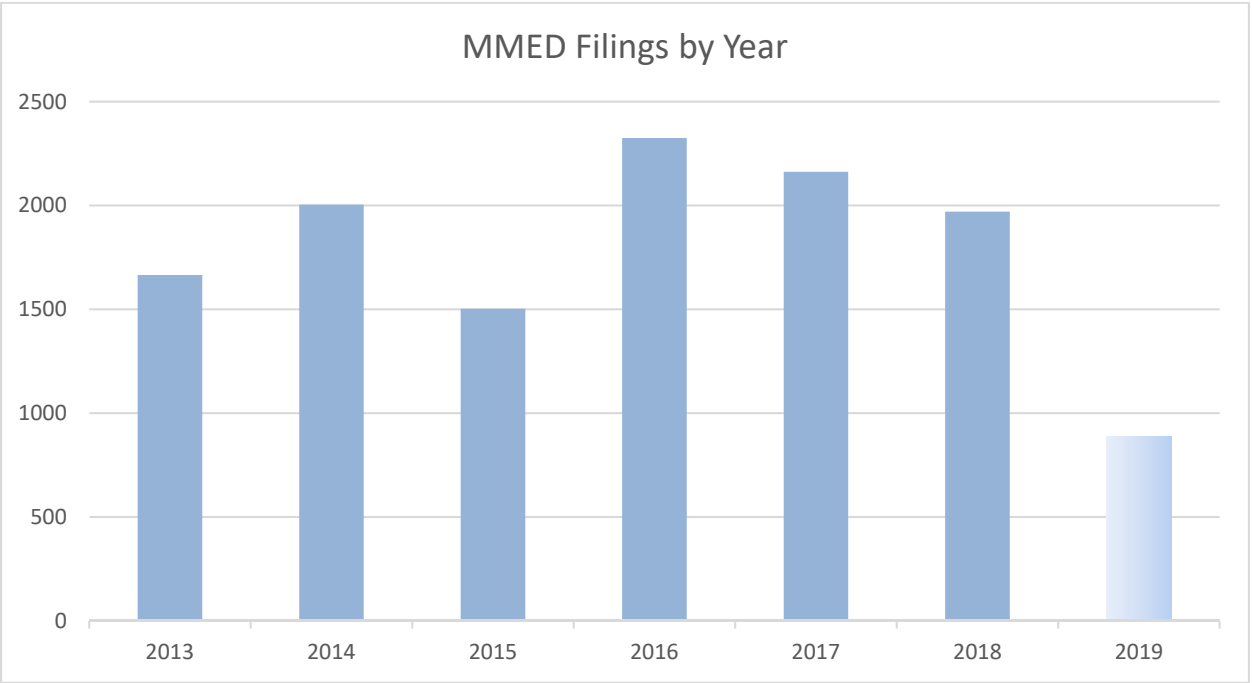
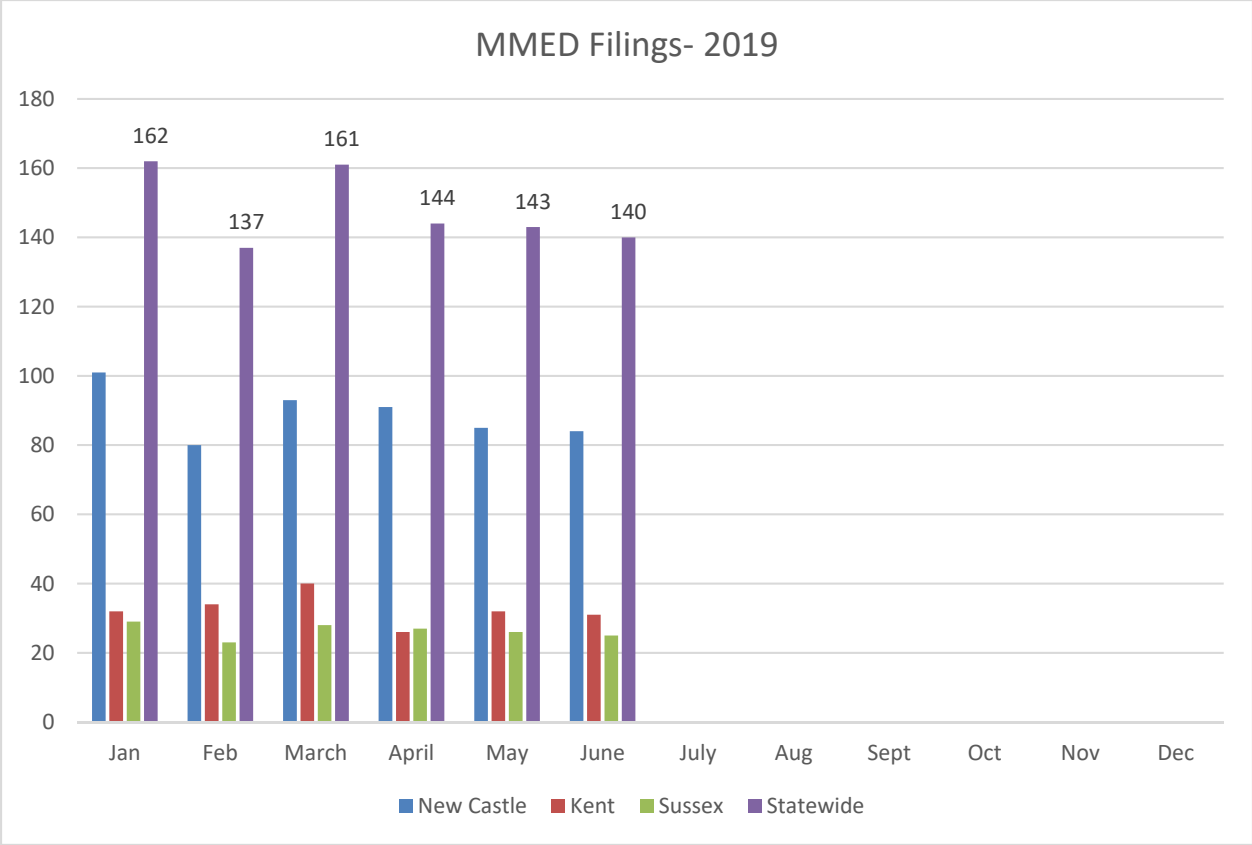


All data is compiled as of June 30, 2019

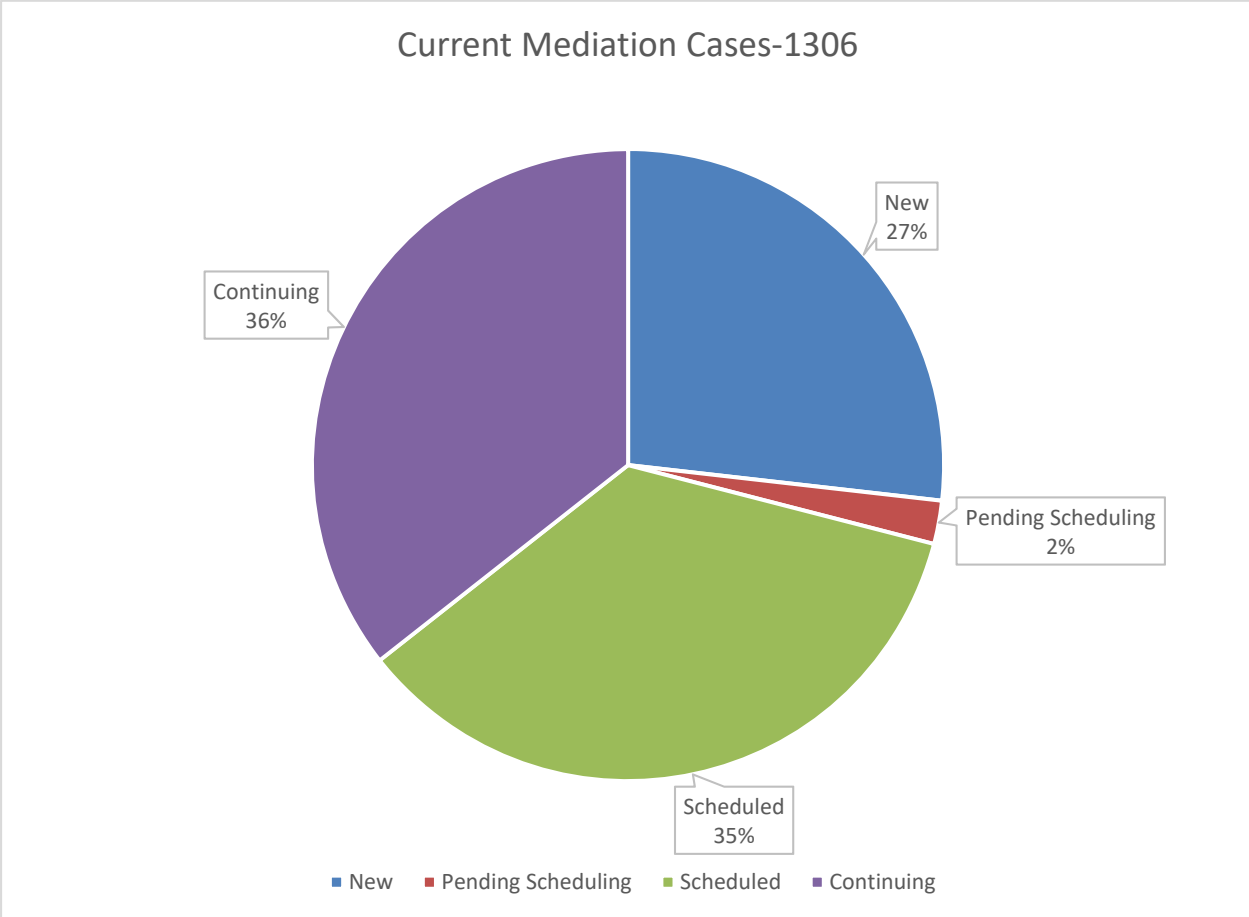
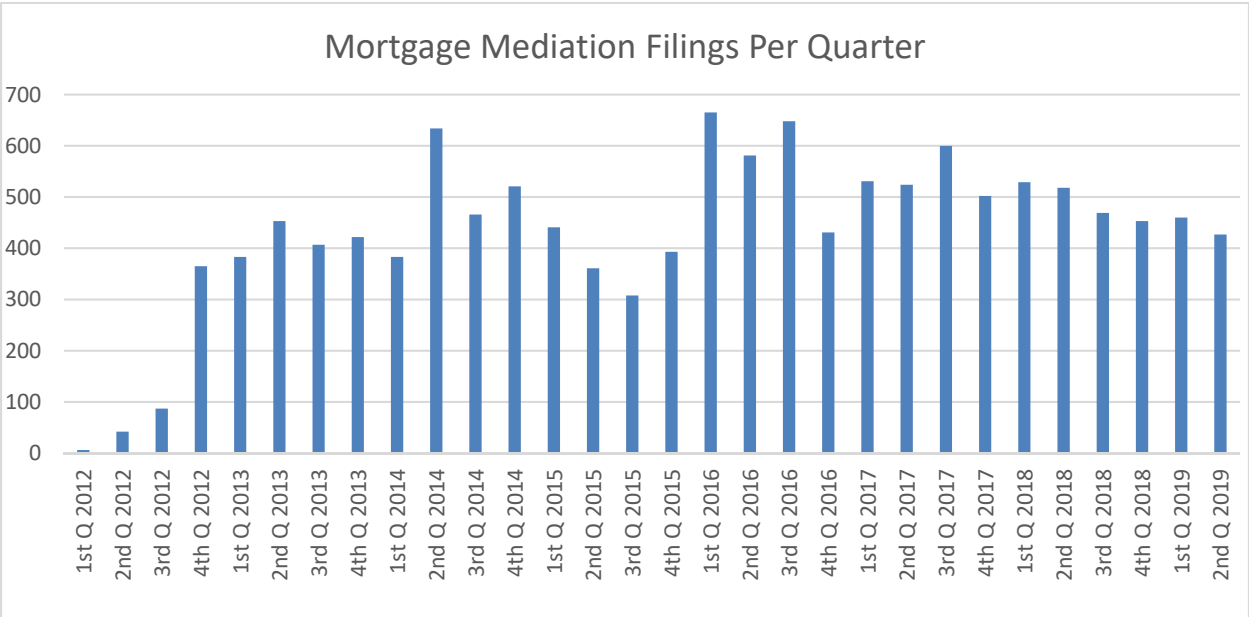
Historical Foreclosure Filings by County



	New Castle	Kent	Sussex	Statewide
2009	3828	1228	1562	6618
2010	3344	1055	1424	5823
2011	3778	936	1198	5912
2012	1016	256	334	1606
2013	1528	544	575	2647
2014	1602	646	641	2889
2015	1296	463	455	2214
2016	1766	631	625	3022
2017	1623	537	544	2704
2018	1389	527	539	2455
2019	644	235	227	1106



All data is compiled as of June 30, 2019



All data is compiled as of June 30, 2019